



166 Manor Park Road
Harlesden
London
NW10 4JT
T 020 8965 2250
E sales@churchillmathesons.com
www.churchillmathesons.com

Churchill & Mathesons

Yewfield Road, London, NW10 9TD

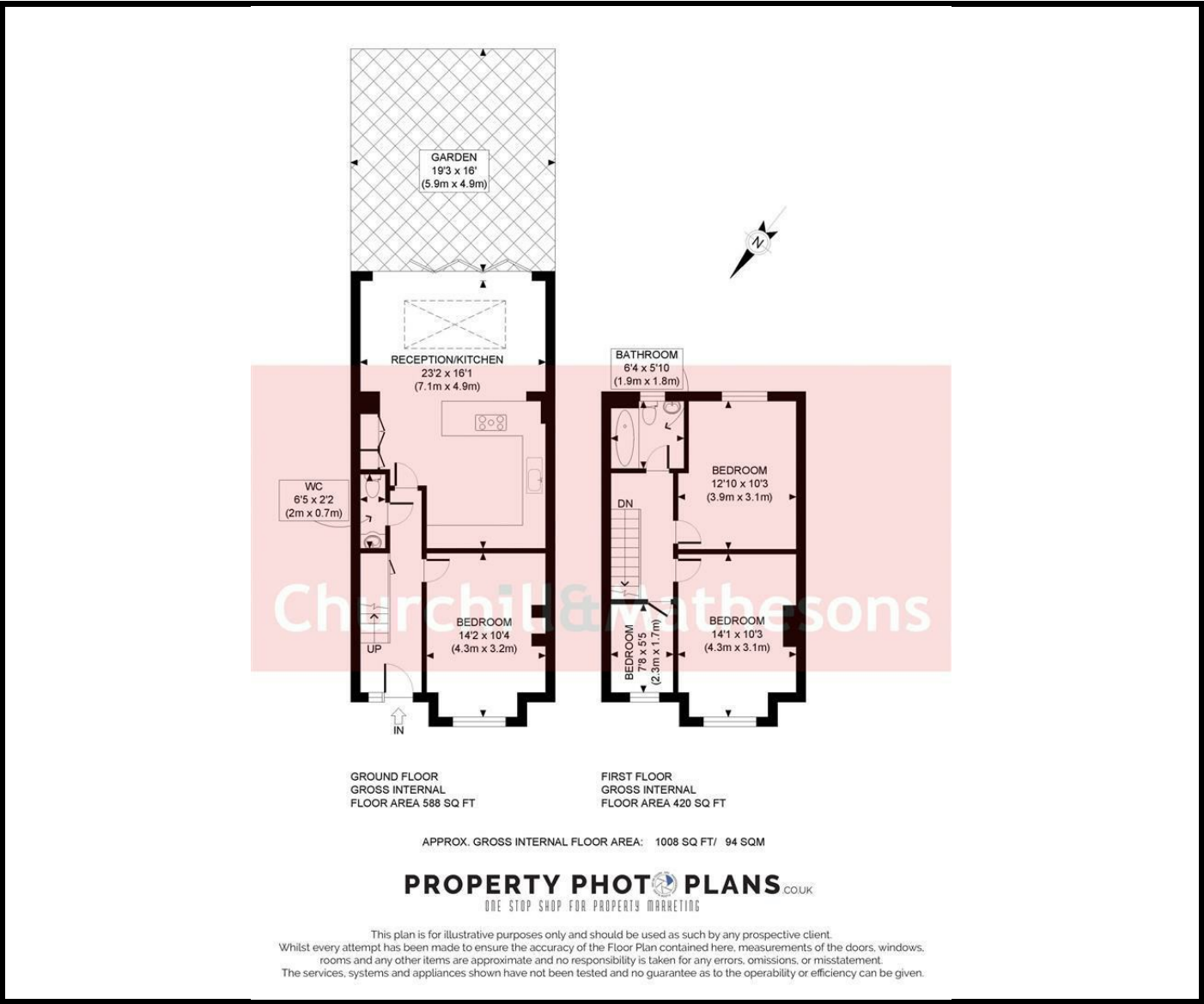
£600 Per Week



KEY FEATURES:

- Spacious 3 bedroom Terraced house
- Beautiful open plan kitchen diner
- Stylish fully tiled bathroom
- Offered in excellent condition throughout
- FURNISHED/UNFURNISHED ~ AVAILABLE NOW

Spacious 3 bedroom Terraced house
* 2 Double and 1 good sized single bedroom
* Beautiful open plan kitchen diner
* Modern fully fitted kitchen with integrated appliances
* Separate toilet downstairs
* Stylish fully tiled bathroom
* Offered in excellent condition throughout
* Located close to all shops and amenities of Harlesden and Willesden
FURNISHED/UNFURNISHED ~ AVAILABLE NOW



Energy Efficiency Rating		
	Current	Potential
Very energy efficient - lower running costs		
(92 plus) A		
(81-91) B		
(69-80) C		
(55-68) D		
(39-54) E		
(21-38) F		
(1-20) G		
Not energy efficient - higher running costs		
England & Wales	EU Directive 2002/91/EC	

Environmental Impact (CO ₂) Rating		
	Current	Potential
Very environmentally friendly - lower CO ₂ emissions		
(92 plus) A		
(81-91) B		
(69-80) C		
(55-68) D		
(39-54) E		
(21-38) F		
(1-20) G		
Not environmentally friendly - higher CO ₂ emissions		
England & Wales	EU Directive 2002/91/EC	

Whilst every effort is made to give a fair description, the accuracy of these particulars is not guaranteed, neither do they constitute an offer or contract.

CHURCHILL & MATHESONS ESTATE AGENTS have not tested any apparatus, equipment, fitting or services and so cannot verify that they are in working order. The buyer is advised to obtain verification from their solicitor or surveyor. Measurements are correct to within +/-6 A sonic tape is used. None of the statements contained in these particulars or any of our properties are to be relied upon as a representation of fact.